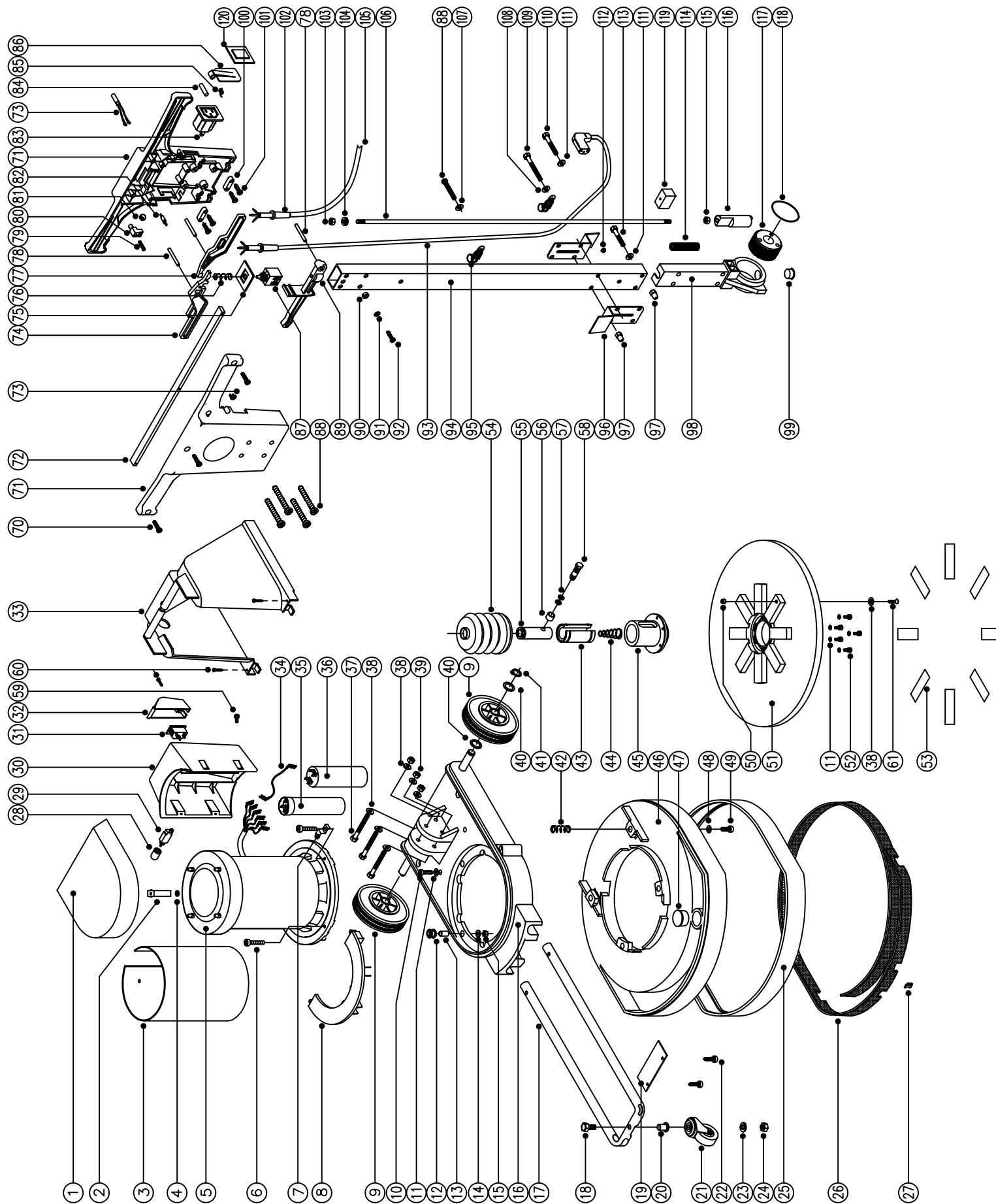




Spare Parts

Model No. NUF-1500

Numatic, International, Chard, Somerset, TA20 2GB 231419
 Tel: 01460 68480 Fax: 01460 68560 DRAWING: EXP-0193 ISS: A14
 Sales - Tel: 01460 68600 Fax: 01460 68458 16/06/2004



MODEL No. NUF-1500

SUB ASSEMBLIES

HANDLE ASSEMBLY - COMPLETE

PART No	DESCRIPTION (ITEMS 70 TO 120)
504152	Handle Assembly - 240V (UK Plug)
504150	Handle Assembly - 220V (Euro Plug)
504147	Handle Assembly - 120V (CSA Plug)
577223	Handle Assembly - 230V (16 Amp Plug)

BASE ASSEMBLY - COMPLETE

PART No	DESCRIPTION (ITEMS 1 TO 59)
504325	Base Assembly - Red (220/240V 50Hz)
504326	Base Assembly - Blue (220/240V 50Hz)
504327	Base Assembly - Green (220/240V 50Hz)
504328	Base Assembly - Yellow (220/240V 50Hz)
504329	Base Assembly - Red (120V 60Hz)
504330	Base Assembly - Blue (120V 60Hz)
504331	Base Assembly - Green (120V 60Hz)
504332	Base Assembly - Yellow (120V 60Hz)

SPARE PARTS

POS.	PART No	DESCRIPTION
1	229063	Cover Moulding Cap
2	229040	Cap Fixing Clip
3	329023	Motor Shroud (1200W)
4	219305	5mm Spirefix
5	205028	240V Motor (1200W)
	205029	110/120V Motor (1200W)
6	219268	M6 x 35mm Pozi Pan Screw
7	304006	Body Fixing Clip
8	229064	Cover Moulding Front
9	229049	160mm Wheel
10	229020	M5 x 30mm Long Machine Screw
11	219016	M5 Shakeproof Washer
12	229025	Grommet
13	229023	Spirol Spacer
14	219008	M6 Form G Steel Washer
15	219088	M6 Stiffnut
16	304038	Base Moulding (Red)
	304041	Base Moulding (Blue)
	304042	Base Moulding (Green)
	304035	Base Moulding (Yellow)
17	304034	Castor Tube
18	219341	M10 Bolt
19	304033	Fixing Plate
20	229100	Spacer
21	204018	Castor
22	219342	No8 x 1" Long Pozi Drive Screw
23	219349	M10 Spring Washer
24	219074	M10 Full Nut
25	206162	Buffer
26	217101	Brush Strip
27	219334	Fixing Clip
28	220459	Overload Dust Cover
29	220456	7 Amp Overload
	220441	16 Amp Overload
30	304064	Capacitor Box
31	220584	Clip In Plug
32	229213	Capacitor Box Plug Cover
33	229062	Cover Moulding Body
34	220119	Brown Link Wire
35	220022	Motor Start Capacitor (100 MFD)
	220090	Motor Start Capacitor (482 MFD)
36	220104	Motor Run Capacitor (15 MFD)
	220103	Motor Run Capacitor (40 MFD)
37	219213	M8 Bolt
38	219010	M8 Form A Steel Washer
39	219078	M8 Stiffnut
40	219219	Wave Washer
41	229051	Circlip
42	229028	Spring
43	229044	Bearing
44	229175	Conical Spring
45	229043	Drive Sleeve

POS.	PART No	DESCRIPTION
46	229098	Ring Moulding (Red)
	229123	Ring Moulding (Blue)
	229124	Ring Moulding (Green)
	229039	Ring Moulding (Yellow)
47	229097	Hole Plug
48	219005	M5 Form G Steel Washer
49	219105	No8 x 5/8" Plastite Screw
50	219076	M5 Stiffnut
51	329095	Pad Holder (Printed)
52	219049	M5 x 12mm Long Pozi Pan Screw
53	217223	Velcro Strip
54	229253	Gaiter
55	229173	M16 Drive Shaft
56	229038	Drive Pin Sleeve
57	219512	"O" Ring
58	229174	Drive Pin
59	219095	M4 x 6mm Taptite Screw
60	219107	No6 x 5/8" Plastite Screw
61	219282	M5 x 16mm Long Countersunk Screw
70	219212	M3.5 x 10mm Long Taptite Screw
71	229017	Handle Moulding
	229999	Handle Moulding (Pair)
72	229076	Support Strip
73	320074	240V Neon Indicator & Lens
	320075	110V Neon Indicator & Lens
74	229001	Right Hand Lever
75	229011	Switch Plate
76	229028	Switch Spring
77	229000	Left Hand Lever
78	229071	Lever Mounting Pin
79	219323	Spring
80	229066	Release Button
81	229050	12mm Stainless Steel Ball
82	229033	Blanking Pin
83	229018	Power Take Off Socket
84	229035	Pivot Pin
85	229034	Torsion Spring
86	229032	Flap
87	229010	Switch
88	219045	M5 x 16mm Long Sems Screw
89	229003	Adjustment Lever
90	219153	Brass Cup Washer
91	219003	M5 Form A Steel Washer
92	219047	M5 x 10mm Long Sems Screw
93	229249	Secondary Cable
	220685	CSA Secondary Cable
94	429044	Handle
95	229139	"P" Clip
96	229129	Mounting Bracket
97	219080	M6 Domenut
98	229081	Handle Casting
99	229099	Hole Plug
100	227008	Cable Clamp
101	219107	No6 x 5/8" Plastite Screw
102	220015	Stress Relief
103	219088	M6 Stiffnut
104	219017	M6 Double Coil Spring Washer
	229090	Mains Cable (UK Plug)
	220254	Mains Cable (Euro Plug)
	220221	Mains Cable (CSA Plug)
	250157	Mains Cable (16 Amp Industrial Plug)
106	229355	Locking Rod
107	219005	M5 Form G Steel Washer
108	219008	M6 Form G Steel Washer
109	219230	M6 x 45mm Long Bolt
110	21965V	M6 x 40mm Long Bolt
111	219007	M6 Form B Steel Washer
112	229009	Hole Blanking Plug
113	219064	M6 x 35mm Long Bolt
114	229138	Spring
115	219099	M6 Halfnut
116	229073	Gear Locking Pin
117	229074	Adjustment Gear
118	219254	"O" Ring
119	229030	Anti-Vibration Pad
120	229026	Socket Blanking Plate (None PTO Socket Machines)