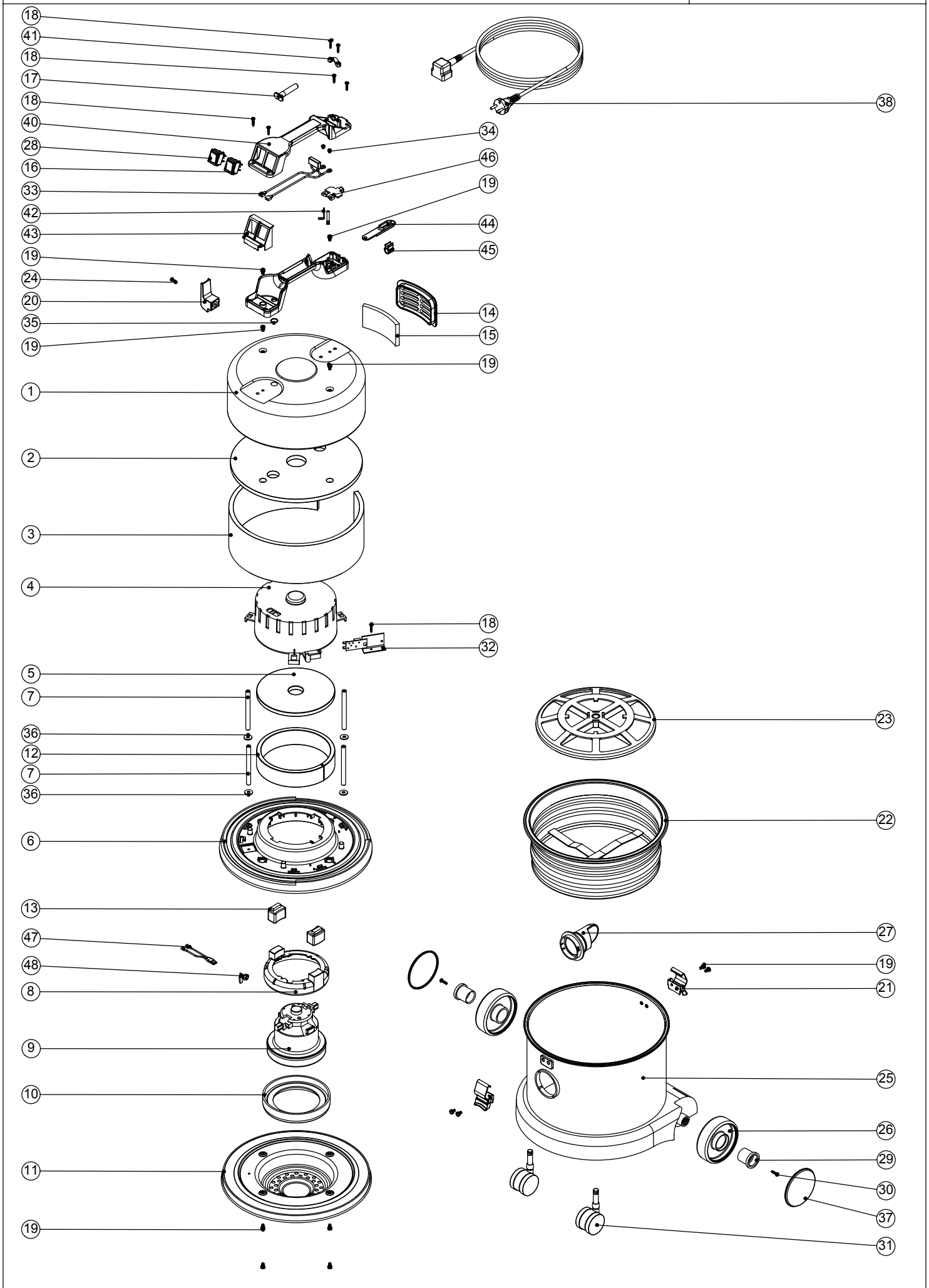


Numatic International Spare Parts

Model No: NVQ370-22 (2 WIRE)

231452
DRAWING: EXP-0238 ISS:A10
10/06/2004



Numatic International Spare Parts

Model No: NVQ370-22 (2 WIRE)

| POS: | ITEM NO: | DESCRIPTION: | COMMENTS: |
|------|----------|---|-----------|
| 1 | 401194 | BLACK HEAD TOP | |
| 2 | 203005 | TOP FELT | |
| 3 | 203009 | SIDE FELT INSULATION | |
| 4 | 229149 | NOISE REDUCTION POD | |
| 5 | 203007 | FELT DISC | |
| 6 | 225127 | TOP MOTOR HOUSING | |
| 7 | 208009 | 102.5MM LONG ALUMINIUM SPACER | |
| 8 | 206420 | ES MOTOR SPACER (BLACK) | |
| 9 | 205070 | 230V MOTOR | |
| 10 | 202065 | BOTTOM MOTOR GASKET | |
| 11 | 401346 | BLACK BOTTOM MOTOR HOUSING | |
| 12 | 203018 | SIDE FELT | |
| 13 | 202087 | TOP MOUNTING RUBBER | |
| 14 | 225064 | OUTLET GRILL | |
| 15 | 206260 | AIR DIFFUSER PAD | |
| 16 | 220552 | RED ROCKER SWITCH | |
| 17 | 220132 | STRESS RELIEF SLEEVE | |
| 18 | 219107 | No6 X 5/8 INCH LONG POZI PAN PLASTITE SCREW | |
| 19 | 219047 | M5 X 10MM LONG POZI PAN SEMS SCREW | |
| 20 | 206006 | CABLE REELING HOOK | |
| 21 | 206038 | TOGGLE | |
| 22 | 207102 | WHITE FILTER ASSEMBLY | |
| 23 | 209050 | SINGLE FILTER GRID | |
| 24 | 221151 | M4 X 12MM LONG POZI PAN SCREW | |
| 25 | 325520 | PROCESSED RED DRUM + INSERTS | |
| | 325521 | PROCESSED BLUE DRUM + INSERTS | |
| | 325522 | PROCESSED GREEN DRUM + INSERTS | |
| | 325523 | PROCESSED YELLOW DRUM + INSERTS | |
| 26 | 227640 | 2 SHOT WHEEL ASSEMBLY | |
| 27 | 227363 | BAG CONNECTOR | |
| 28 | 220243 | BLACK/GREEN ROCKER SWITCH | |
| 29 | 227868 | WHEEL HUB FOR 2 SHOT WHEEL | |
| 30 | 219105 | No8 X 5/8 INCH LONG POZI PAN PLASTITE SCREW | |
| 31 | 204111 | 50MM TWIN WHEEL CASTOR WITH PU TYRE | |
| 32 | 220285 | 230V SPEED CONTROL (TRIAC) | |
| 33 | 220142 | SUPPRESSOR ASSEMBLY | |
| 34 | 219090 | M4 X 8MM LONG POZI PAN SEMS SCREW | |
| 35 | 219363 | O-RING | |
| 36 | 219008 | M6 FORM G WASHER | |
| 37 | 227638 | BLACK PLAIN TRIM | |
| 38 | 220953 | 8.4M X 1.00MM X 2 CORE NUCABLE (EURO PLUG) | |
| | 220945 | 8.4MT X 1.00MM X 2 CORE NUCABLE(UK PLUG) | |
| | 236017 | 10.0MT X 1.00MM X 2 CORE NUCABLE (SWISS PLUG) | |
| 40 | 227624 | HANDLE COVER 10AMP 2 POLE 2 SWITCH | |
| 39 | 320686 | HANDLE BASE MOULDING | |
| 41 | 227564 | PLUG LOCATION CLAMP | |
| 42 | 206562 | CONTACT PIN | |
| 43 | 227629 | SWITCH MOUNTING BRACKET | |
| 44 | 227636 | STRAIN RELIEF | |
| 45 | 227637 | CABLE CLIP | |
| 46 | 227632 | TERMINAL COVER & CLAMP | |
| 47 | 220929 | BIMETALIC OVERLOAD ASSEMBLY | |
| 48 | 206490 | OVERLOAD CLIP | |

