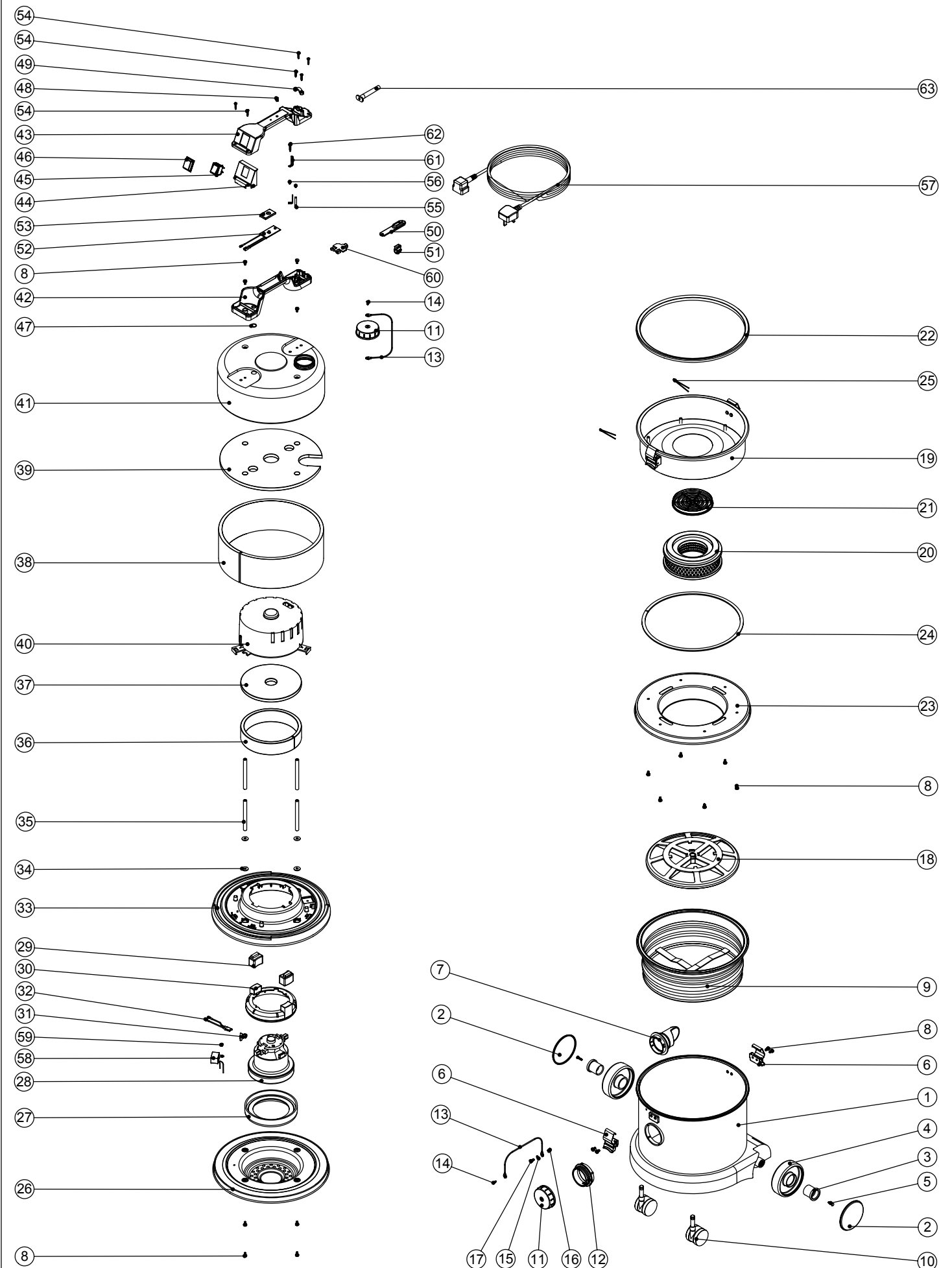


Numatic International Spare Parts

Model No: HZQ-370 EXPLODED DRAWING

234246
DRAWING: EXP-0677 ISS:A01
24/05/2004



Numatic International Spare Parts

Model No: HZQ-370 EXPLODED DRAWING

POS:	ITEM NO:	DESCRIPTION:	COMMENTS:
1	300207	YELLOW PROCESSED CONTAINER (NO FACE)	
2	227638	PLAIN BLACK TRIM	
3	227868	WHEEL HUB FOR 2 SHOT WHEEL	
4	227640	2 SHOT WHEEL ASSEMBLY	
5	219105	No8 X 5/8 INCH LONG POZI PAN PLASTITE SCREW	
6	206038	TOGGLE	
7	227363	BAG CONNECTOR	
8	219047	M5 X 10MM LONG POZI PAN SEMS SCREW	
9	207102	WHITE FILTER ASSEMBLY	
10	204111	50MM TWIN WHEEL CASTOR WITH PU TYRE	
11	206363	BLANKING CAP	
12	227396	RED THREADED NECK	
13	303037	BLANKING CAP FIXING WIRE	
14	219301	No6 X 3/8 INCH LONG POZI PAN SELF TAP SCREW	
15	219003	M5 FORM A STEEL WASHER	
16	219076	M5 NYLON INSERT NUT	
17	219049	M5 X 12MM LONG POZI PAN SCREW	
18	209050	SINGLE FILTER GRID	
19	401389	HZ TOP PLATE YELLOW	
20	604124	NVM-24B REPLACEMENT HZ MICRO HEPA CARTRIDGE	
21	206010	FAN GUARD	
22	202043	TOP PLATE SEAL	
23	401017	YELLOW BOTTOM PLATE	
24	212052	3MM X 9MM INSEAL	
25	219172	1/8 X 56MM SPLIT COTTER PIN"	
26	401348	BLACK BOTTOM MOTOR HOUSING	
27	202065	BOTTOM MOTOR GASKET	
28	205070	230V MOTOR	
	205075	120V MOTOR	
29	202087	TOP MOUNTING RUBBER	
30	206420	ES MOTOR SPACER (BLACK)	
31	206490	OVERLOAD CLIP	
32	220929	BIMETALIC OVERLOAD ASSEMBLY	
33	225127	TOP MOTOR HOUSING	
34	219008	M6 FORM G WASHER	
35	208009	102.5MM LONG ALUMINIUM SPACER	
36	203018	SIDE FELT	
37	203007	FELT DISC	
38	303024	SIDE FELT PUNCHED	
39	303026	TOP FELT PUNCHED	
40	229149	NOISE REDUCTION POD	
41	401704	BLACK HEAD TOP	
42	320686	HANDLE BASE MOULDING	
43	320678	HANDLE COVER (DRILLED)	
	320287	HANDLE COVER (DRILLED/HARD WIRED)	
44	227635	SWITCH MOUNTING BRACKET (1 SWITCH)	
45	220552	RED ROCKER SWITCH	
46	206573	SWITCH COVER (PLUG HANDLE)	
47	219363	O-RING	
48	220381	AMBER LENS	
49	227564	PLUG LOCATION CLAMP	
50	227636	STRAIN RELIEF	
51	227637	CABLE CLIP	
52	220677	230V LOW FLOW INDICATOR DEVICE	
	220678	115V LOW FLOW INDICATOR DEVICE	
53	202086	LOW FLOW PCB MOUNTING GASKET	
54	219107	No6 X 5/8 INCH LONG POZI PAN PLASTITE SCREW	
55	206562	CONTACT PIN	
56	219566	M4 X 6MM LONG POZI PAN SCREW	
57	236010	10.0M X 1.00MM X 3 CORE NUCABLE (UK PLUG)	
	236050	10.0M X 1.5MM X 3CORE CABLE (INDUSTRIAL PLUG)	
58	220777	SUPPRESSOR ASSEMBLY	
59	219090	M4 X 8MM LONG POZI PAN SEMS SCREW	
60	227631	TERMINAL COVER & CLAMP (3 PIN)	
61	206563	EARTH CONTACT PIN	
62	219274	M4 X 20MM LONG POZI PAN SCREW	
63	220923	STRESS RELIEF	

HARD WIRED MACHINES ONLY